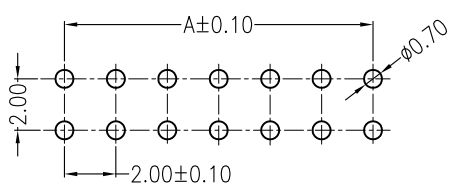
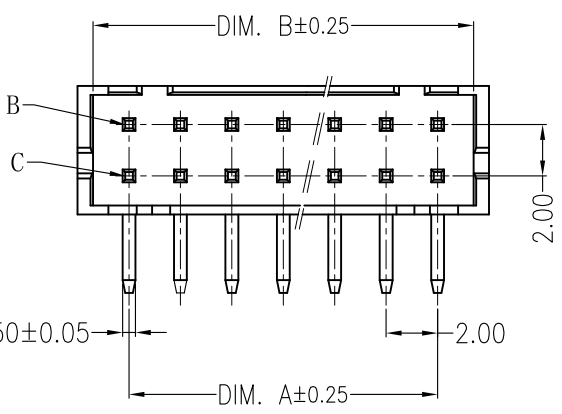
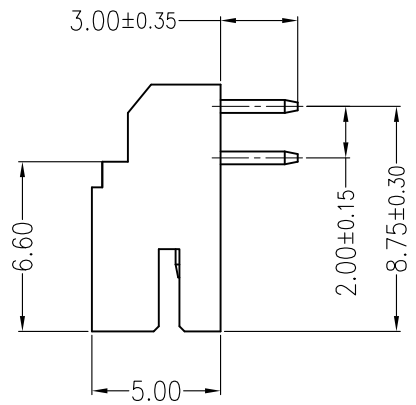
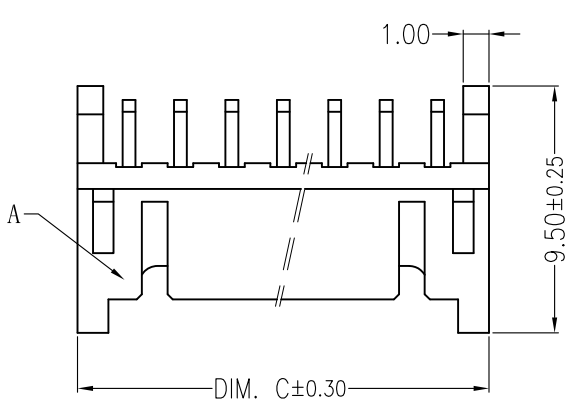


REV	ECN No.	DESCRIPTION	DESIGN	DATE
A0	-	NEW RELEASE	吴丹平	2017.05.29
-	-	-	-	-

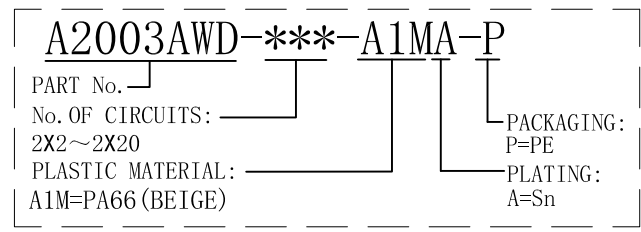


SUGGESTED PCB LAYOUT
(COMPONENT SIDE)

主要技术参数 Main Specifications

线数 (Poles): 04 to 40
 接触电阻 (Contact resistance): $\leq 20m\Omega$
 绝缘电阻 (Insulation resistance): $\geq 1000M\Omega$
 额定电压 (Rated voltage): 250V AC DC
 额定电流 (Rated current): 2.0A AC DC
 耐电压 (Withstand Voltage): 1000V AC/minute
 温度范围 (Temperature Range): $-25^{\circ}C \sim +85^{\circ}C$

ORDER INFORMATION:



Circuits	Dimensions (mm)		
	DIM. A	DIM. B	DIM. C
202 (2X2)	2.00	5.00	6.00
203 (2X3)	4.00	7.00	8.00
204 (2X4)	6.00	9.00	10.00
205 (2X5)	8.00	11.00	12.00
206 (2X6)	10.00	13.00	14.00
207 (2X7)	12.00	15.00	16.00
208 (2X8)	14.00	17.00	18.00
209 (2X9)	16.00	19.00	20.00
210 (2X10)	18.00	21.00	22.00
211 (2X11)	20.00	23.00	24.00
212 (2X12)	22.00	25.00	26.00
213 (2X13)	24.00	27.00	28.00
214 (2X14)	26.00	29.00	30.00
215 (2X15)	28.00	31.00	32.00
216 (2X16)	30.00	33.00	34.00
217 (2X17)	32.00	35.00	36.00
218 (2X18)	34.00	37.00	38.00
219 (2X19)	36.00	39.00	40.00
220 (2X20)	38.00	41.00	42.00

ITEM	COMPONENT	QTY	MATERIAL	FINISH
C				
B	CONTACT	2*2~2*20PCS	Brass	Sn-plated
A	HOUSING	1 PCS	PA66	94V-0, COLOR:BEIGE

JKUN 温州健坤接插件有限公司 WENZHOU JKUN CONNECTOR CO., LTD.		TITLE: 2.00mm PITCH 90 WAFER DIP TYPE	
X.±0.5	X.±5'	USE:	PART NO.:
.X±0.3	.X±2'	CUSTOMER	A2003AWD-***-A1MA-P
.XX±0.25	.XX±1'	APPD:	DWG NO.:
--	--	邵敬和	JKUN/GCCP-0535
UNITS: mm	DR:	CHKD:	SCALE
	吴丹平	田峰	1 : 1
			SHEET
			1 / 1